

Алматы (7273)495-231  
Ангарск (3955)60-70-56  
Архангельск (8182)63-90-72  
Астрахань (8512)99-46-04  
Барнаул (3852)73-04-60  
Белгород (4722)40-23-64  
Благовещенск (4162)22-76-07  
Брянск (4832)59-03-52  
Владивосток (423)249-28-31  
Владикавказ (8672)28-90-48  
Владимир (4922) 49-43-18  
Волгоград (844)278-03-48  
Вологда (8172)26-41-59  
Воронеж (473)204-51-73  
Екатеринбург (343)384-55-89

Ижевск (3412)26-03-58  
Иваново (4932)77-34-06  
Иркутск (395)279-98-46  
Казань (843)206-01-48  
Калининград (4012)72-03-81  
Калуга (4842)92-23-67  
Кемерово (3842)65-04-62  
Киров (8332)68-02-04  
Коломна (4966)23-41-49  
Кострома (4942)77-07-48  
Краснодар (861)203-40-90  
Красноярск (391)204-63-61  
Курск (4712)77-13-04  
Курган (3522)50-90-47  
Липецк (4742)52-20-81

Магнитогорск (3519)55-03-13  
Москва (495)268-04-70  
Мурманск (8152)59-64-93  
Набережные Челны (8552)20-53-41  
Нижегород (831)429-08-12  
Новокузнецк (3843)20-46-81  
Ноябрьск (3496)41-32-12  
Новосибирск (383)227-86-73  
Омск (3812)21-46-40  
Орел (4862)44-53-42  
Оренбург (3532)37-68-04  
Пенза (8412)22-31-16  
Петрозаводск (8142)55-98-37  
Псков (8112)59-10-37  
Пермь (342)205-81-47

Ростов-на-Дону (863)308-18-15  
Рязань (4912)46-61-64  
Самара (846)206-03-16  
Саранск (8342)22-96-24  
Санкт-Петербург (812)309-46-40  
Саратов (845)249-38-78  
Севастополь (8692)22-31-93  
Симферополь (3652)67-13-56  
Смоленск (4812)29-41-54  
Сочи (862)225-72-31  
Ставрополь (8652)20-65-13  
Сыктывкар (8212)25-95-17  
Сургут (3462)77-98-35  
Тамбов (4752)50-40-97  
Тверь (4822)63-31-35

Тольяти (8482)63-91-07  
Томск (3822)98-41-53  
Тула (4872)33-79-87  
Тюмень (3452)66-21-18  
Улан-Удэ (3012)59-97-51  
Ульяновск (8422)24-23-59  
Уфа (347)229-48-12  
Хабаровск (4212)92-98-04  
Чебоксары (8352)28-53-07  
Челябинск (351)202-03-61  
Череповец (8202)49-02-64  
Чита (3022)38-34-83  
Якутск (4112)23-90-97  
Ярославль (4852)69-52-93

Киргизия (996)312-96-26-47

Россия (495)268-04-70

Казахстан (772)734-952-31

<https://integra.nt-rt.ru> || [iag@nt-rt.ru](mailto:iag@nt-rt.ru)

## Устройство для дозирование жидкостей Pipetboy pro



**PIPETBOY pro** Enlightened pipetting

# PIPETBOY pro

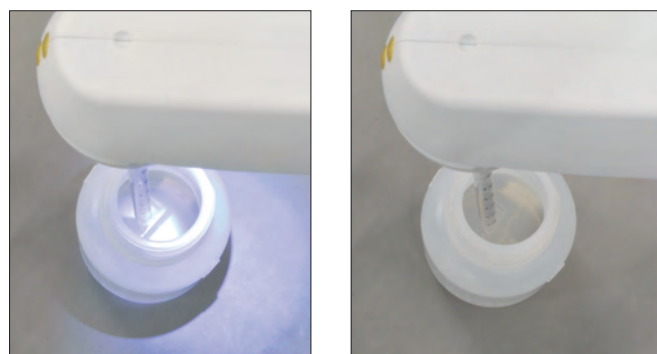
Liquid handling lies at the core of every life science experiment and a key to successful research is the ability to handle liquids with precision and efficiency.

The PIPETBOY pro pipetting aid unites all essential characteristics for productive work with serological pipettes: accuracy, speed and ergonomic design.

## Accurate and fast filling of all pipette types

The accuracy of pipetting depends on precise graduations on the serological pipette and on the ability to accurately match the liquid's meniscus with the graduation mark. The PIPETBOY pro enables the user to very accurately displace liquid in the pipette by applying variable finger pressure on the pipettor triggers.

Fully press the aspiration trigger to quickly draw liquid into the pipette until almost full, then gradually release the trigger to reduce speed and accurately match the meniscus to the graduation mark. Similarly, when dispensing, slightly press the trigger for drop-by-drop dispensing of liquid (gravity dispensing), or fully trigger the powerful pump motor for fast emptying of the pipette.



The PIPETBOY pro with the LED switched on (left) makes the bottom of the bottle clearly visible compared to the bottle that is not illuminated (right).



## Illumination of the work area

Adequate lighting is a prerequisite for error-free and comfortable pipetting. The LED integrated in the PIPETBOY pro provides an optimal illumination of the area around the pipette, ensuring accurate pipetting and preventing eyestrain. The LED lights up only when pressing the pipetting triggers and automatically switches off after a few seconds. You can also turn off the illumination function completely if necessary (Patent pending).

## Quality you can rely on

PIPETBOY pipette controllers are designed and manufactured to the highest quality standards and therefore offered with an extended 3 year warranty upon registration.



## Design matters

The PIPETBOY pro has been designed following the recommendations of hand shape ergonomics. The result is an extra-light pipettor of 190 grams that comfortably fits in your hand and makes even prolonged pipetting effortless.

To guarantee a firm grip of small and large pipettes alike, the pipette mount in the nose of the PIPETBOY pro has a special conical shape which can be inverted when a one or two ml pipette is used creating perfect stability.

The PIPETBOY pro is available in five colors so that you can assign a specific color to a particular application and so avoid mix-ups. You can also simply pick your favorite one and brighten your lab.

The PIPETBOY pro is powered by high-quality NiMH batteries (standard AAA type) that you can charge approximately one thousand times. When fully charged, the PIPETBOY pro can accomplish 4000 pipetting cycles of 25 ml each before it needs recharging. Once the charge becomes nearly depleted, a red indicator light alerts you when batteries need to be charged.



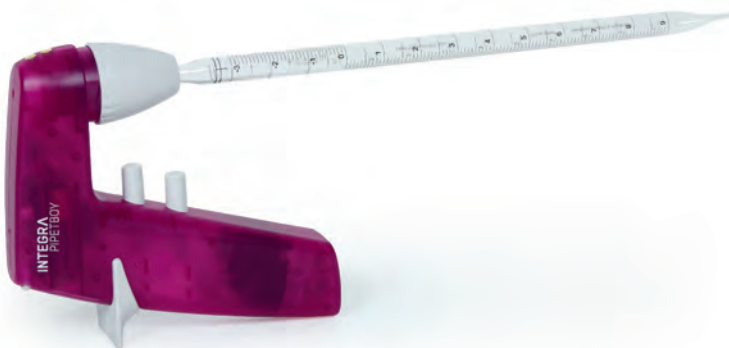
## Smart accessories

Place your PIPETBOY pro in the **charging station** when not in use and the batteries will be automatically charged, so that you always have a pipettor that is ready to use.

The **stand** for the PIPETBOY and VACUBOY is the ideal accessory for working in a cell culture hood. It keeps the workplace organized and the PIPETBOY pro, with or without inserted pipette, is always at hand.

## Stable positioning

The smart design of PIPETBOY pro allows you to place the unit stably on its back side, even with a serological pipette inserted.



## Technical data

### Pipetting specifications

Maximum pipetting speed	12 ml/s
Presetting of speed (via thumb wheel)	2 – 12 ml/s
Pipette compatibility	glass and plastic pipettes with volumes from 1 to 100 ml
Filter protection	0.45 µm (included) or 0.2 µm (order separately)
Weight	190 g
Gravity dispensing	slight pressure on dispense button

### Batteries charging specifications

Autonomy (of fully charged batteries)	4000 aspiration and dispensing cycles of 25 ml.
Charging of NiMH batteries	Up to 1000 times per battery. User can replace batteries.
Charge indicator light	Red: charging needed Green: connected to current
Rechargeable battery	Widely available AAA battery (1.2V, 1000 mAh)

## Ordering information

Instrument		Theme	Part No.
<b>PIPETBOY pro</b>	Pipettor complete with spare sterile filter, two batteries, mains adapter and wall mount.	white	156 400
		pink	156 401
		green	156 402
		orange	156 403
		blue	156 404
Accessories			Part No.
Charging station	for parking and charging the PIPETBOY pro		156 450
Stand	for PIPETBOY and VACUBOY		155 065
Mains adapter (100-240 VAC, 50/60 Hz)	US version		156 630
	EU version		156 631
	UK version		156 632
	AU version		156 633
	JP version		156 634
Consumables			Part No.
Filter 0.45 µm	sterile		153 015
	non-sterile		153 016
Filter 0.2 µm	sterile		156 608
	non-sterile		156 607
Pipette mount	for holding the pipette in the nose piece, silicone		151 020
Battery set	2 AAA batteries, rechargeable		156 151

Алматы (7273)495-231  
 Ангарск (3955)60-70-56  
 Архангельск (8182)63-90-72  
 Астрахань (8512)99-46-04  
 Барнаул (3852)73-04-60  
 Белгород (4722)40-23-64  
 Благовещенск (4162)22-76-07  
 Брянск (4832)59-03-52  
 Владивосток (423)249-28-31  
 Владикавказ (8672)28-90-48  
 Владимир (4922) 49-43-18  
 Волгоград (844)278-03-48  
 Вологда (8172)26-41-59  
 Воронеж (473)204-51-73  
 Екатеринбург (343)384-55-89

Ижевск (3412)26-03-58  
 Иваново (4932)77-34-06  
 Иркутск (395)279-98-46  
 Казань (843)206-01-48  
 Калининград (4012)72-03-81  
 Калуга (4842)92-23-67  
 Кемерово (3842)65-04-62  
 Киров (8332)68-02-04  
 Коломна (4966)23-41-49  
 Кострома (4942)77-07-48  
 Краснодар (861)203-40-90  
 Красноярск (391)204-63-61  
 Курск (4712)77-13-04  
 Курган (3522)50-90-47  
 Липецк (4742)52-20-81

Магнитогорск (3519)55-03-13  
 Москва (495)268-04-70  
 Мурманск (8152)59-64-93  
 Набережные Челны (8552)20-53-41  
 Нижний Новгород (831)429-08-12  
 Новокузнецк (3843)20-46-81  
 Ноябрьск (3496)41-32-12  
 Новосибирск (383)227-86-73  
 Омск (3812)21-46-40  
 Орел (4862)44-53-42  
 Оренбург (3532)37-68-04  
 Пенза (8412)22-31-16  
 Петрозаводск (8142)55-98-37  
 Псков (8112)59-10-37  
 Пермь (342)205-81-47

Ростов-на-Дону (863)308-18-15  
 Рязань (4912)46-61-64  
 Самара (846)206-03-16  
 Саранск (8342)22-96-24  
 Санкт-Петербург (812)309-46-40  
 Саратов (845)249-38-78  
 Севастополь (8692)22-31-93  
 Симферополь (3652)67-13-56  
 Смоленск (4812)29-41-54  
 Сочи (862)225-72-31  
 Ставрополь (8652)20-65-13  
 Сыктывкар (8212)25-95-17  
 Сургут (3462)77-98-35  
 Тамбов (4752)50-40-97  
 Тверь (4822)63-31-35

Тольяти (8482)63-91-07  
 Томск (3822)98-41-53  
 Тула (4872)33-79-87  
 Тюмень (3452)66-21-18  
 Улан-Удэ (3012)59-97-51  
 Ульяновск (8422)24-23-59  
 Уфа (347)229-48-12  
 Хабаровск (4212)92-98-04  
 Чебоксары (8352)28-53-07  
 Челябинск (351)202-03-61  
 Череповец (8202)49-02-64  
 Чита (3022)38-34-83  
 Якутск (4112)23-90-97  
 Ярославль (4852)69-52-93

Киргизия (996)312-96-26-47

Россия (495)268-04-70

Казахстан (772)734-952-31

<https://integra.nt-rt.ru> || [iag@nt-rt.ru](mailto:iag@nt-rt.ru)